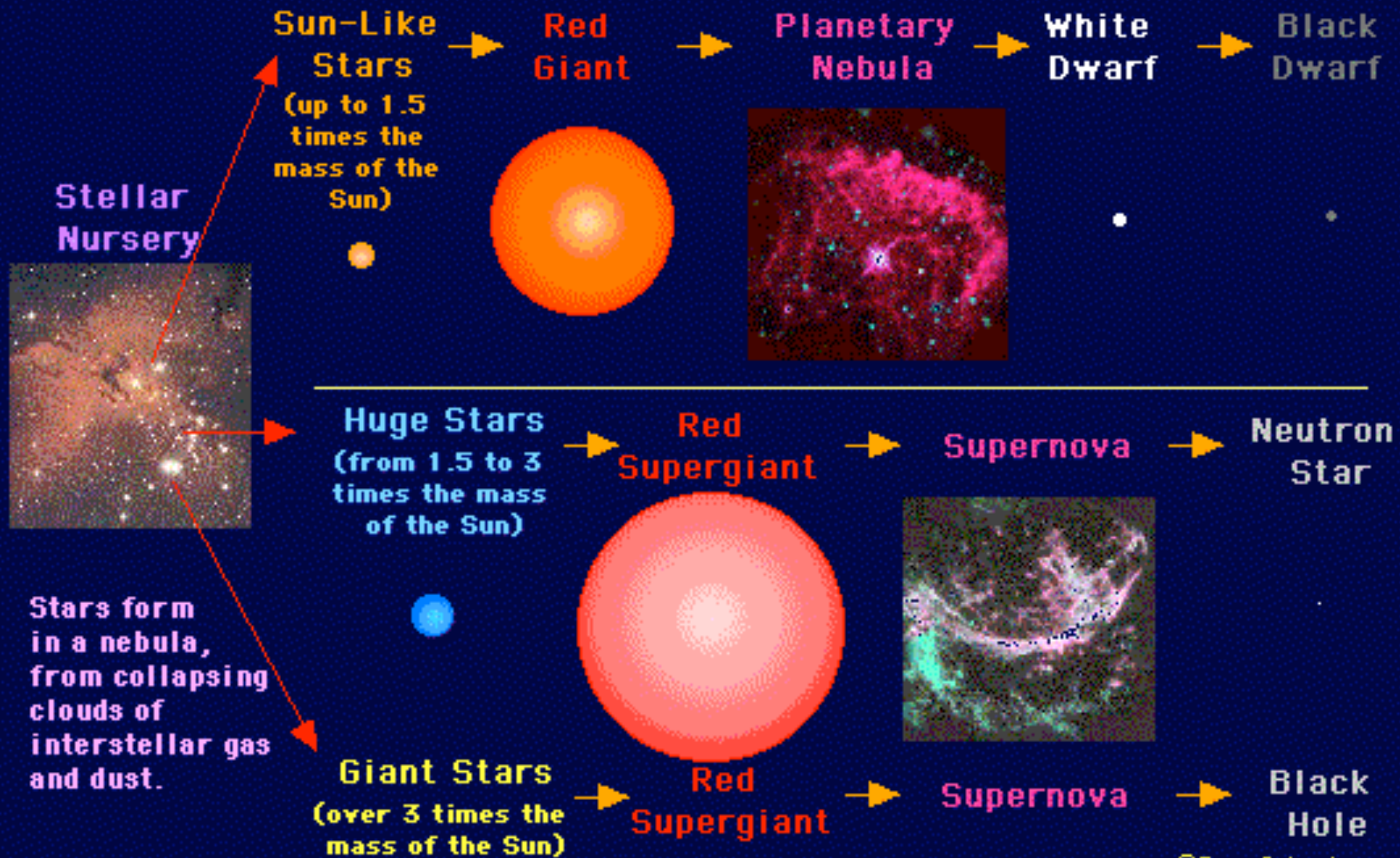


The Lifecycle of Stars



The Life and Death of Stars

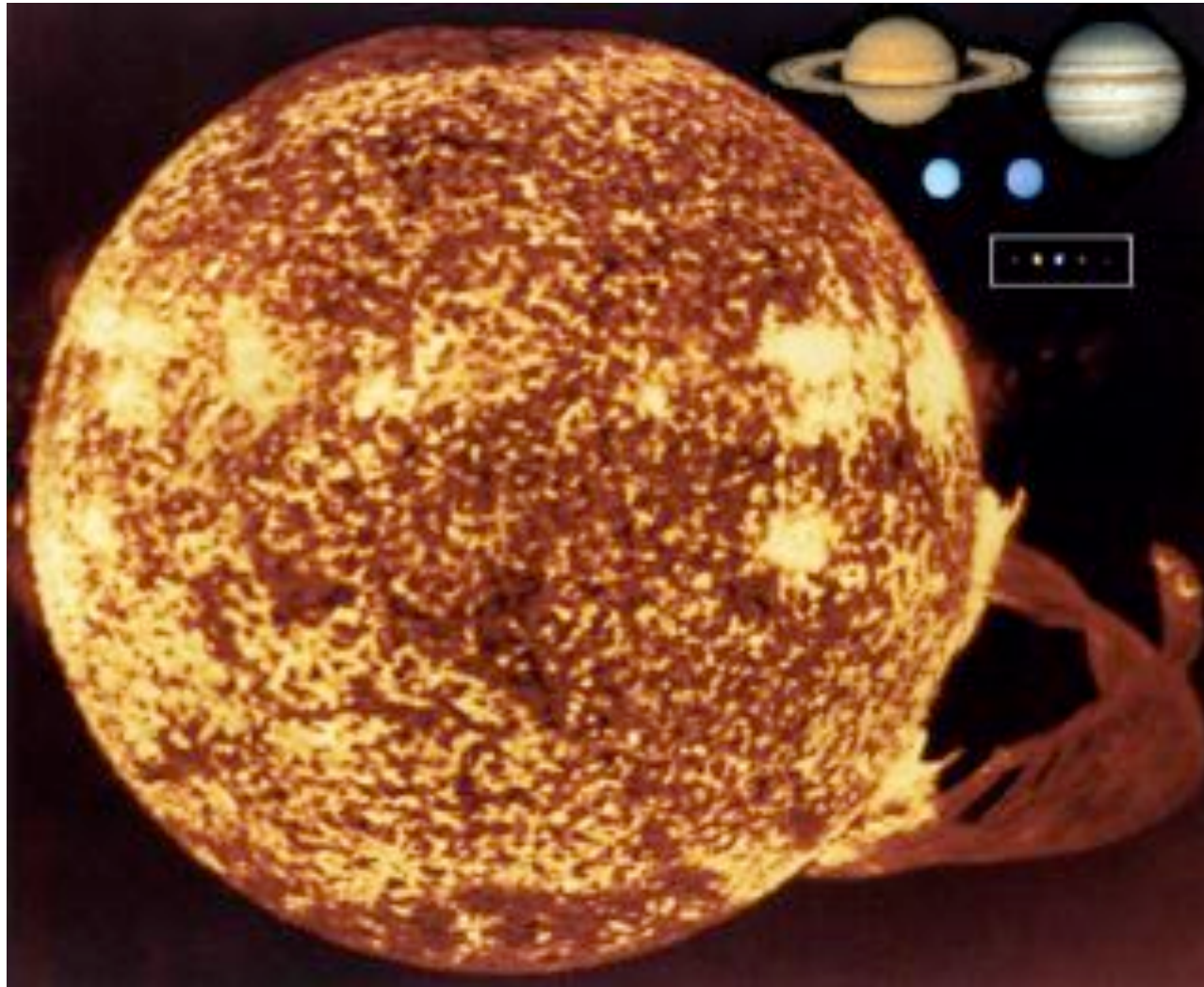
Sun-sized Stars

Pillars of Creation – The Eagle Nebula



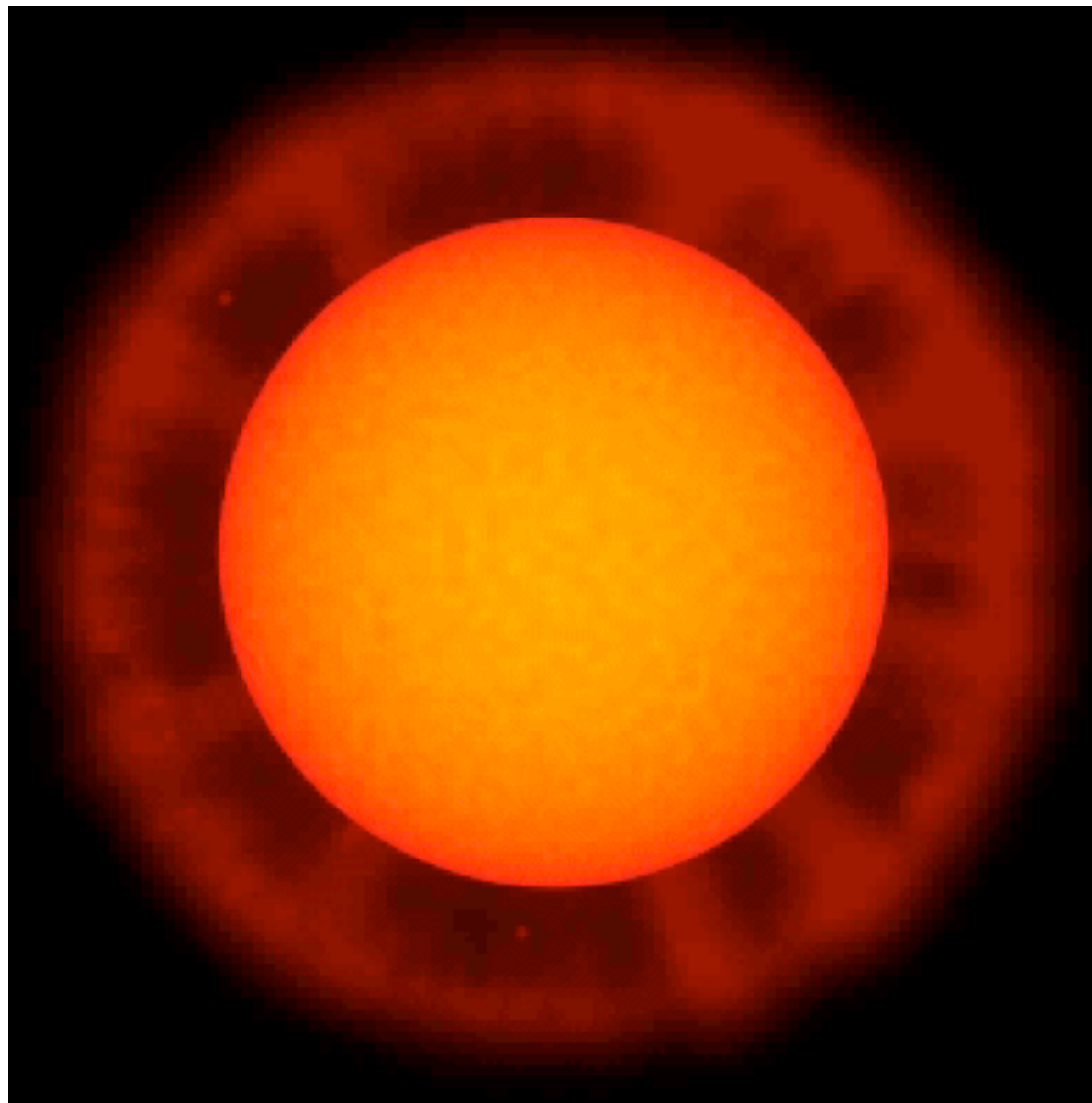
These pillar-like structures in the Eagle nebula. These eerie, dark pillar-like structures are columns of cool, interstellar hydrogen gas and dust that serve as incubators for new stars.

The Sun and planets are shown to the same scale.



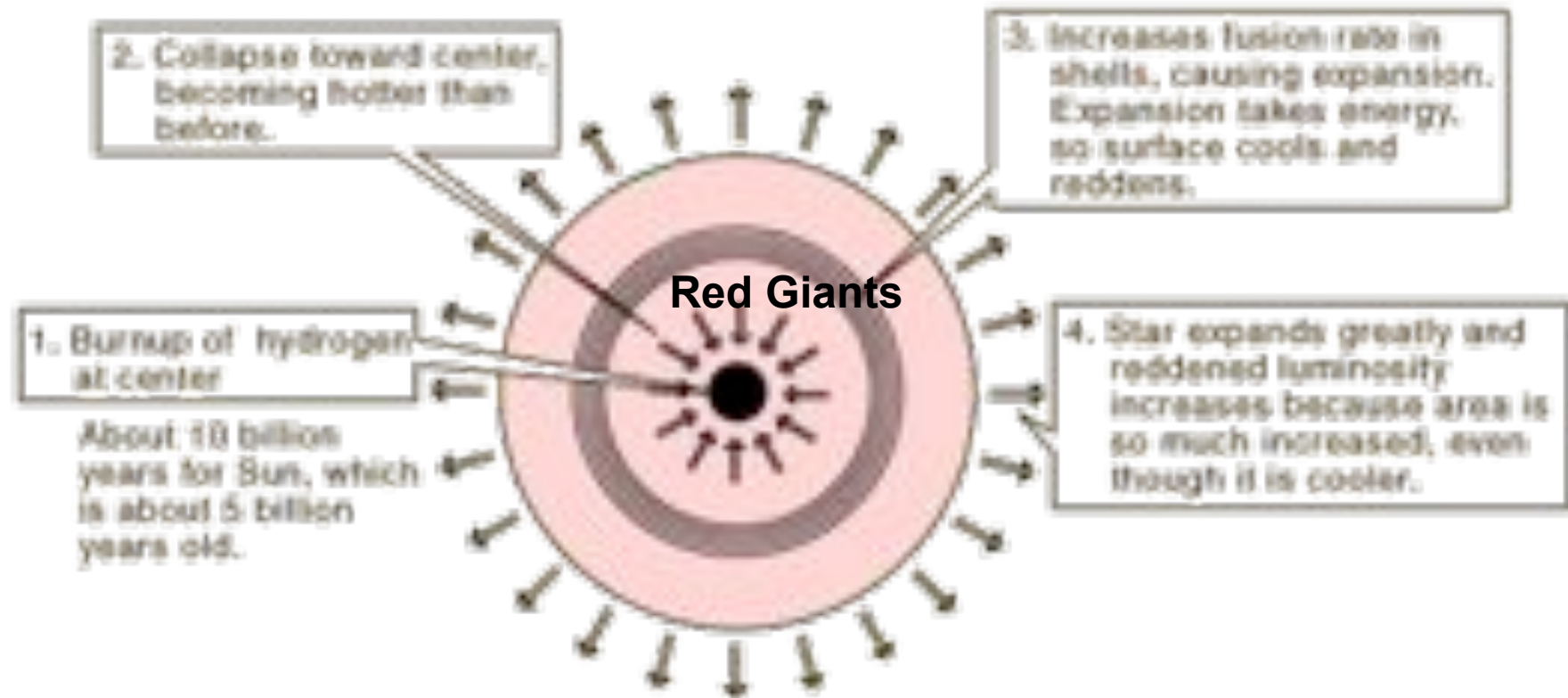
- The small terrestrial planets and tiny Pluto are in the box---the Earth is the blue dot near the center of the box

Red Giant

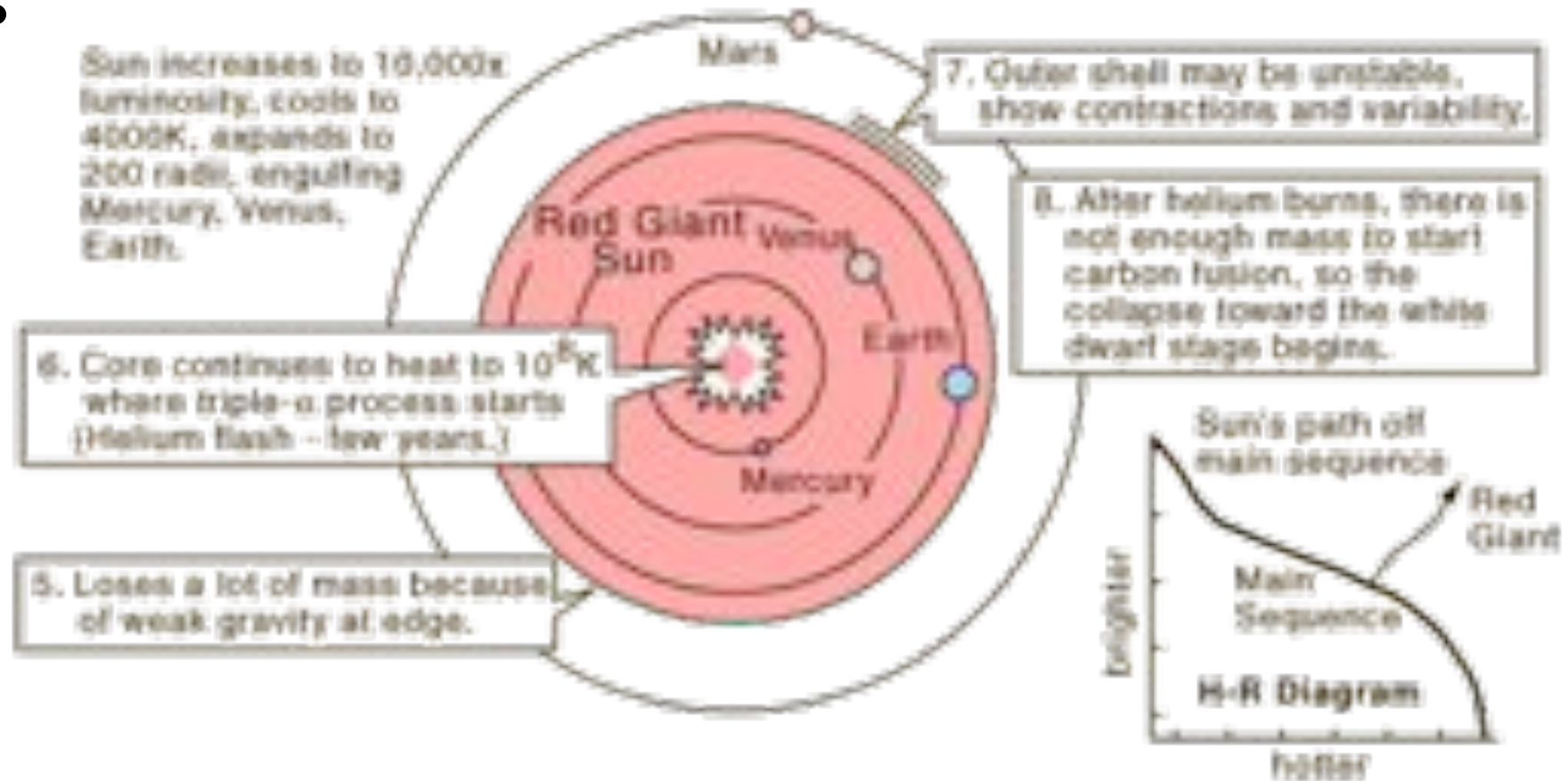


Red Giants

For stars of less than 4 solar masses, hydrogen burn-up at the center triggers expansion to the red giant phase

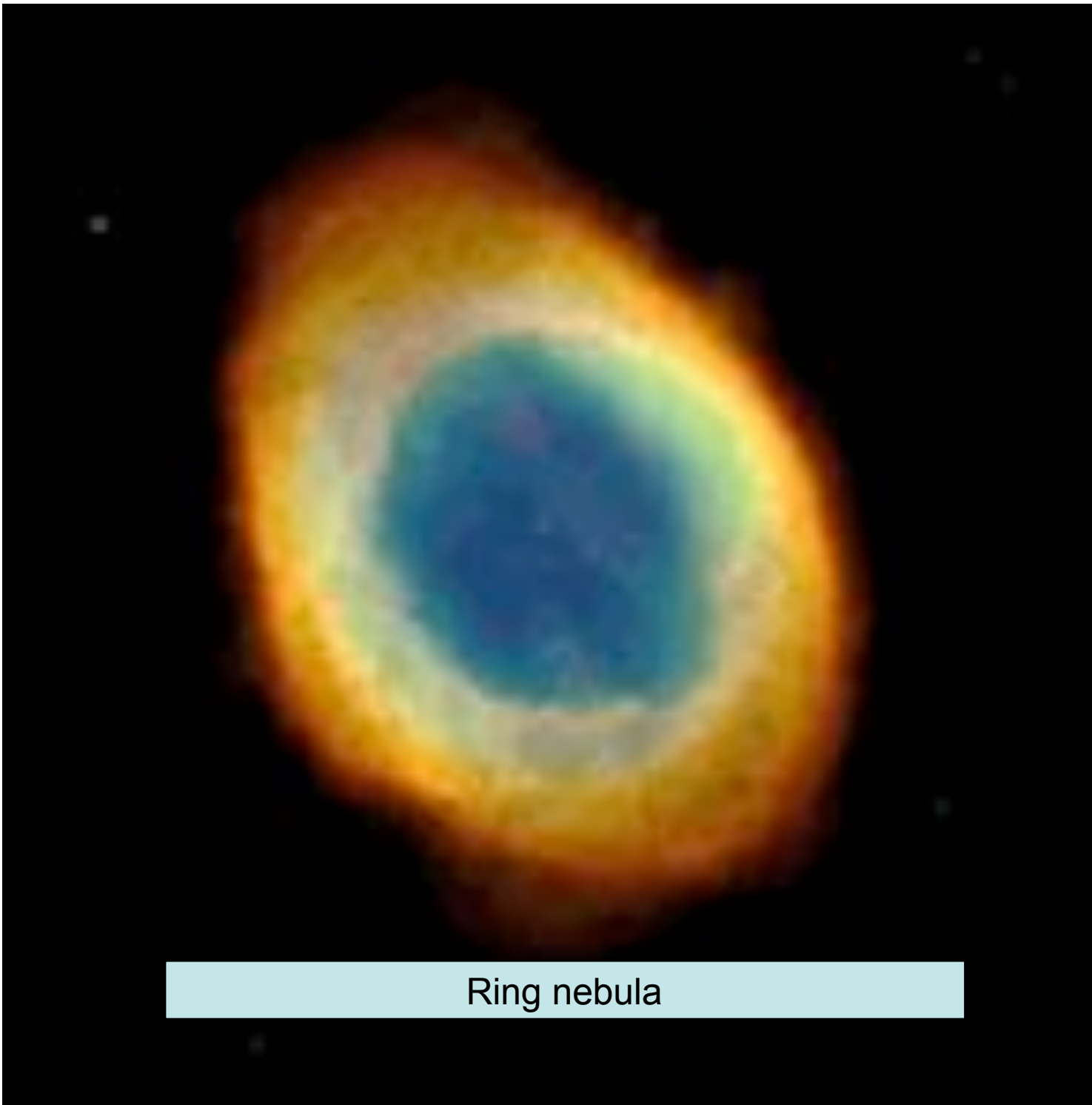


Red Giant Phase of the Sun





Planetary nebula



Ring nebula

Ant Nebula



The Dumbbell nebula



Cat's eye nebula

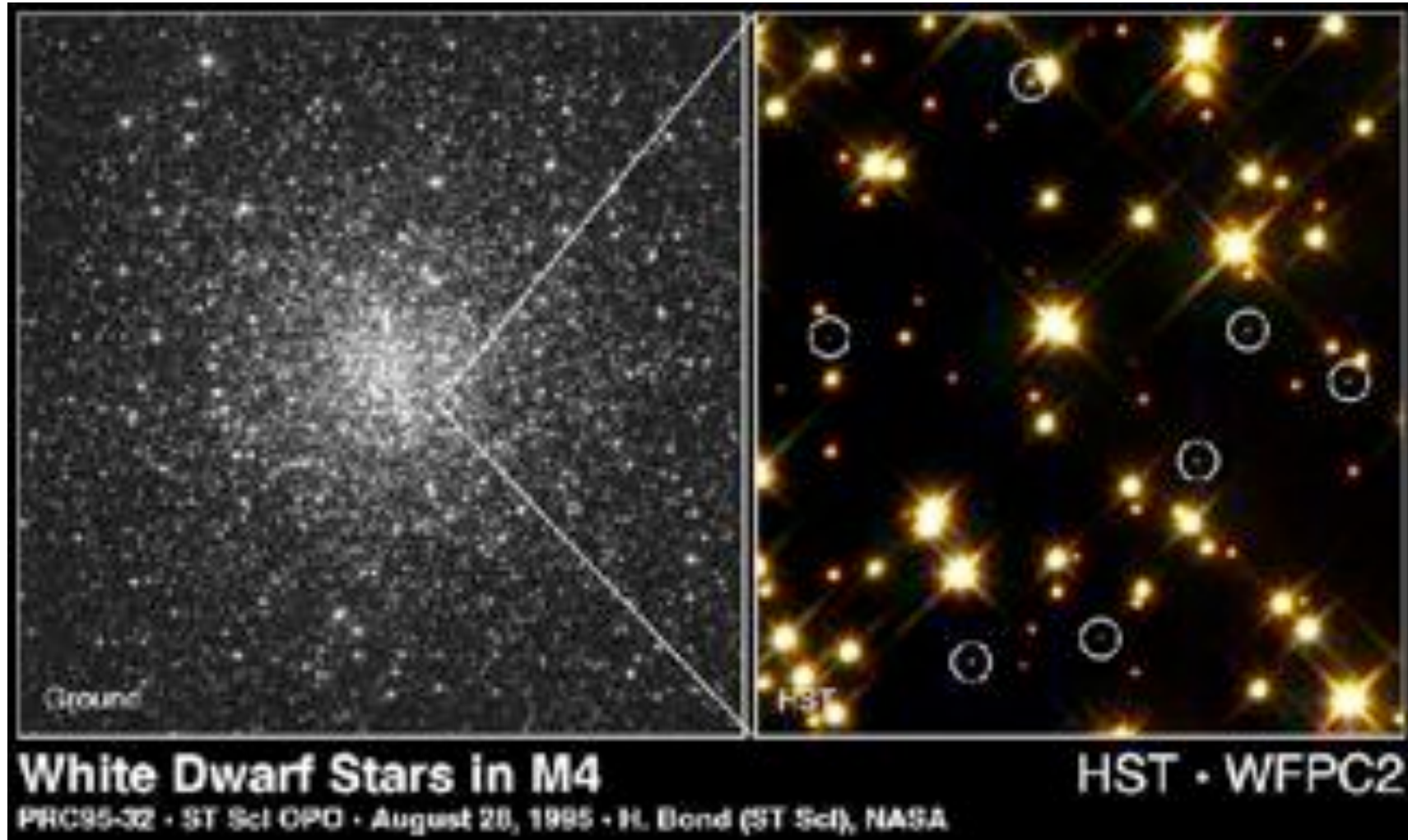




The “Helix” Planetary Nebula in Aquarius



White dwarf stars



Giant Stars

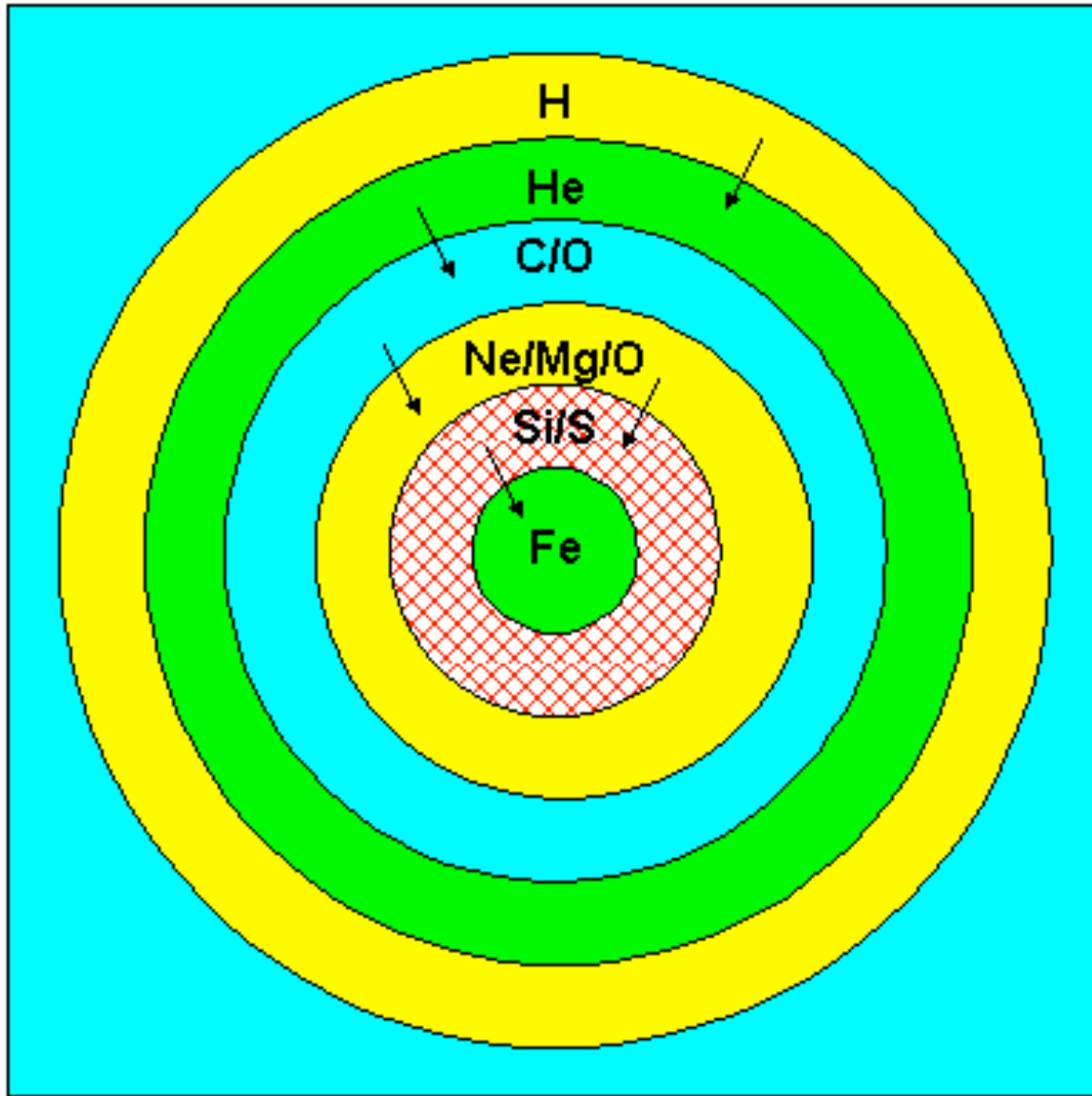
Betelgeuse – a giant red star



A supernova

SN 1987A in the Large Magellanic Cloud





The
Structure
of a Pre-
Supernova
Supergiant

Crab Nebula Supernova Remnant





The Cygnus Loop is the expanding shell (plus shock-excited interstellar gas) resulting from a supernova explosion.

The Pulsar Lighthouse Effect

